

UNICA

LUXURY LIGHTED MIRRORS
by Cantoni

Luxury Lighted Mirrors

| | |
|--------------------|----|
| Line and Mission | 3 |
| I-light | 4 |
| MH line | 5 |
| MDE line | 9 |
| SP line | 13 |
| MF line | 17 |
| Visual | 27 |
| PH line | 29 |
| PHF line | 36 |
| Aluminium finishes | 40 |
| Quality | 41 |

AND THERE WAS LIGHT. BUT NOT ANY LIGHT

The perfect light can create suggestions and give rise to deep feelings. It's this emotional light to be the distinctive feature of Unica, a complete range of illuminated mirrors staging the full expressive force of contemporary luxury.

Each mirror resulting from the Italian craftsmanship is a unique piece combining design, technological innovation and functionality harmoniously.

Cantoni goal is to support architects, interior designers and furniture companies in the creation of astonishing and highly functional bathrooms for Luxury hotels, spa and residential facilities, thanks to mirrors subverting the usual rules and losing their role of mere furnishings in order to become structural elements of space in which the light is the absolute protagonist.

I-LIGHT: SYNTHESIS OF FUNCTIONALITY AND STYLE

The greatest ideas come from an endless passion and a patient and daily testing. That is why in Cantoni the contamination between design, research and experience has resulted in I-light technology.

I-Light is a fully-integrated lighting technology recreating the colour rendering and the reception of sunlight with absolute perfection.

Far from being a mere decorative element, the mirror becomes a highly functional tool, the key element to organize the design of the spaces destined to facial care, beauty and image.

I-light system in numbers:

- . Shade of light: 4200°kelvin degree
- . Lights life: 100.000h/min.
- . Power Consumption: 4Watt/h/ light point
- . Required bulbs: none
- . Universal Power socket: 110V-240V

MH line

I light you up

Design: **Cantoni**

The application of an aesthetic concept developed around a particular constructive curved geometry to the intrinsic strength of the aluminium gives lightness and movement to the glass. A stylistically-impeccable formal research wisely mixes elements of classicism and modernity to create refined spaces that are surprising but comfortable.

The opal lens, directly embedded into the reflecting surface and carved with high-precision instruments, spread the light created by the I-light integrated technology (Brightness 4200° K) in a thickness of only 2.55 inches (6.5 cm).

MH line

Design: **Cantoni**

Mirror with direct and indirect lighting in silvered-back float glass enclosed in an anodised aluminium frame with convex profile capable of spreading the emission of RGB backlight folding away the inner wire with a 180° range.



- . Aluminium crush-proof structure
- . IP67 side actuator for front lights
- . Safety Film
- . RF managing the RGB backlight

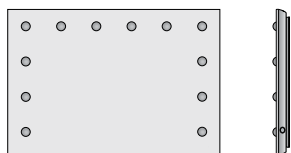


These objects with a refined design are real sculptures that catch the eyes and blend in anyspace, embellishing it with reflections.



- . Customised and on-demand production
- . Standard dimensions in the catalogue
- . Frame with different finishes available in:
 - brushed aluminium
 - polished aluminium
 - satin-finished aluminium

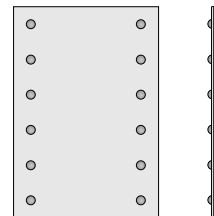
MH01
1020X700



MH01XL
1400X1020



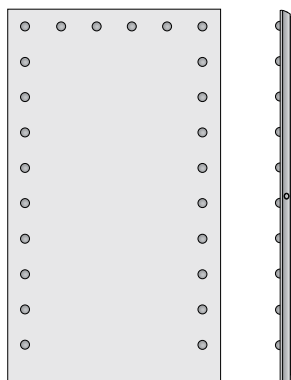
MH03
700X1020



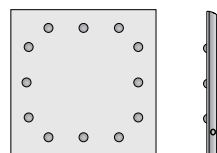
MH04
1020X1020



MH05
1020X1800



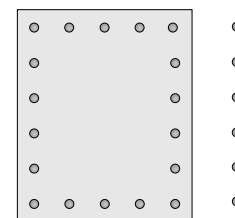
MH06
700X700



MH07
700X700



MH08.V
840X1020



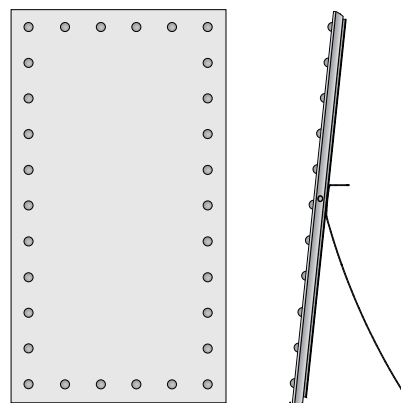
MH08.O
1020X840



MH09.O
1865X1020



MH09. STAND ALONE
1020X1865X620



MH10
1020X700



MH11
1020X700





MDE line

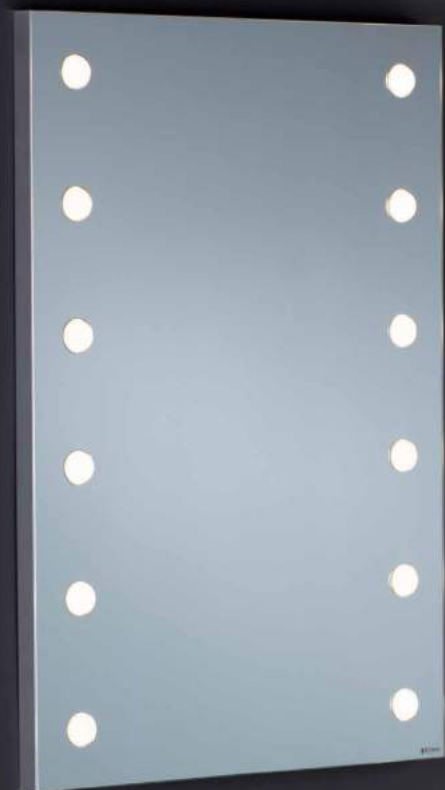
It's amazing what the right light can do

Design: **Cantoni**

The aery surface of the mirror welcomes, in a precious setting, the curved profile of opalescent lenses, replicating with absolute perfection the chromatic shade of the sunlight.

A collection encasing, in its apparently simple lines, countless hours of study and research on the refraction of light.

MDE mirror line is successfull sythesis of functionality,advanced technology and a kind of sensual Hollywood appeal.



MDE line

Design: **Cantoni**

Wall mirror with I-light diffused lighting in silver-backed float glass with 3.5-cm (1,4 inch) silver anodised aluminium linear profile and adjustable light intensity.



- . IP67 side actuator
- . 6 or 12 front lights
- . Pre-installed rear coupling system
- . Horizontal and vertical wall version
- . Available in table version



These mirror modules with simple and essential lines, designed for directional furnishing, thanks to low power consumption, simplicity of installation and absolute absence of heat emission, create suggestive and highly-functional corners in commercial spaces, hair styling salons, pharmacies and optician's shops.

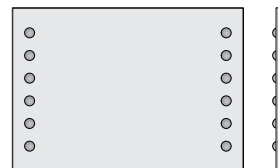


- . Customised and on-demand production
- . Standard dimensions in the catalogue
- . Side-by-side modular elements
- . Also available modules without lights

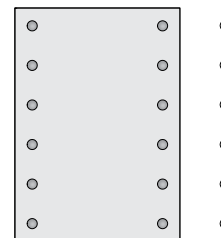
MDE501
800X600



MDE502
1020X700



MDE505
700X1020



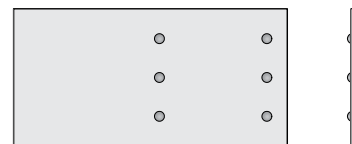
MDE510
1000X600



MDE511
1200X600



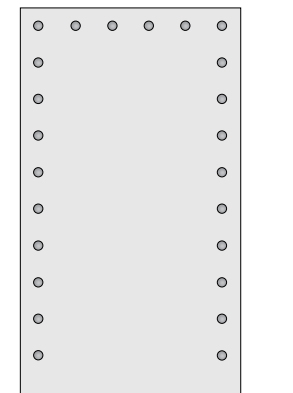
MDE512
1200X600



MDE513
1200X600



MDE516
1020X1800





SP line

Shape, content and function

Design: **Cantoni**

The materialization of a thought combining textural geometries with ethereal transparencies: the SP line of mirrors is the point of arrival of a conceptual and sensory journey that winds through metals, reflections, lights, volumes and technology. A line that comes from a creative experience at the service of real people, objects designed for living environments and making the most of this time.

The ideal light reception on the face is guaranteed by the 5° splaying of the frames. The opal lenses diffusing the I-light light enrich with reflections the polished geometric surfaces of the frame aluminium.

SP line

Design: **Cantoni**

Wall mirror with I-light diffused illumination adjustable in intensity.

5° splayed frame in painted or chromed anodised aluminium, 5 cm (1,96 inches) thickness. Spherical opal lenses are inserted with millimetre precision in the shaped notches on the frame.



- . IP67 side actuator
- . 12 I-light front lights
- . Horizontal and vertical wall version



An amazing collection of mirrors of authentic design, where the shape, playing with transparencies and perspectives, acquires relevance and thickness in combination with an advanced technology, in order to be inserted in a functional and flexible way in real and liveable spaces.

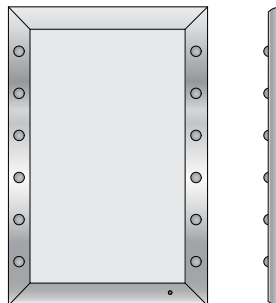


- . Possible customised production
- . Aluminium frame available in the following versions:
 - chrome-plated
 - white glossy painted
 - black glossy painted

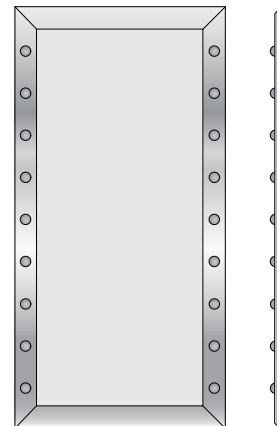
SP300
1200X800



SP301
800X1200



SP302
1000X1800



Linea MF

**Our wealth is knowing how to
create luxury**

Design: **Cantoni**

Result of the perfect synergy between industrial design approach, care craftsmanship and creativity, the line of illuminated mirrors with MF frame is the modern concept of luxury, in a dance moving between the icy clarity of glass and the warmth of ancient and living materials, such as wood and leather.



MF Wood Line

Our wealth is knowing how to create luxury

Design: **Cantoni**

Renowned Italian artistic woodworking and advanced research light meet in the long history of Cantoni, creating a collection of unique mirrors, each one representing a sculpture with its own identity and character.

Size, light, style and material: each mirror is a unique and customizable piece produced by Italian craftsmen.



MF line - Argent Vague

Design: **Cantoni**

MF wall mirror with hand-decorated wood frame with silver leaf. I-light integrated lighting technology.

Customised and on-demand production.



- . Crush-proof inner structure
- . IP67 side actuator



MF line - Baroque

Design: **Cantoni**

Wall mirror with I-light that diffuses illumination with adjustable intensity. The mirror in this image, customisable as far as size and number of lights are concerned, is enclosed in a Baroque frame made of African acacia wood with gold leaf by Italian framers. Integrated light technology, side actuator.



- . Crush-proof inner structure
- . IP67 side actuator

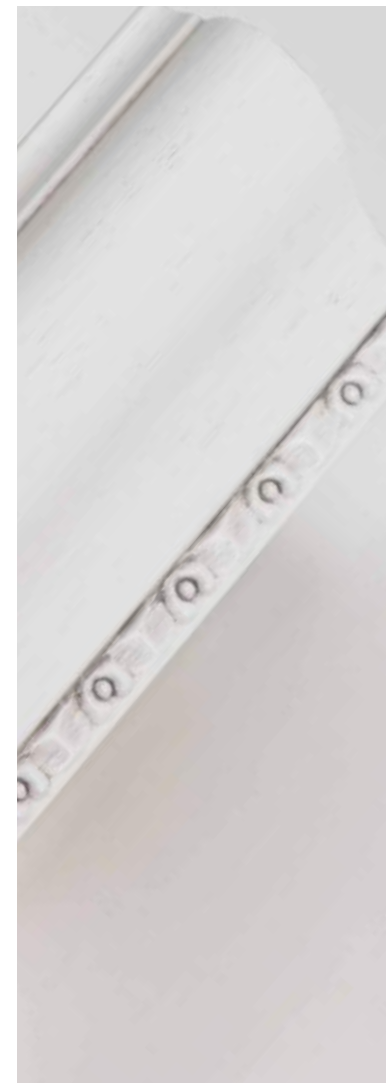


The most intimate, personal and ephemeral paintings: these sheets of mirroring glass, illuminated by opalescent lenses, full of sunlight, return our portrait as a work of art.



- . Customised and on-demand production
- . Wooden frame in different finishes available in
 - Baroque style
 - Contemporary style
 - Classic style

Examples in the following page





MF Leather Line

Our wealth is knowing how to create luxury

Design: **Cantoni**

Touch sensitive and gazing when looking at it, leather gives the mirrors of the MF line an antique flavour luxury .

The reflection of I-lights plays with the leather texture, materializing in these objects the concept of contemporary luxury.

The leather is shaped, cut and applied onto the frame by hand and then sewn by Italian skilled leather craftsmen.

MF line

Design: **Cantoni**

Wall and stand-alone mirrors with I-lights and adjustable intensity. Each element can be customized by size, number of lights, shape and colour of the frame. The leather is shaped, cut, applied and hand sewn by Italian skilled leather craftsmen. Built-in light technology, side actuator.



- . Customized and under-request production
- . Aluminium crushproof structure
- . 4200° kelvin I-lights
- . IP67 side actuator for front lights
- . Safety Film

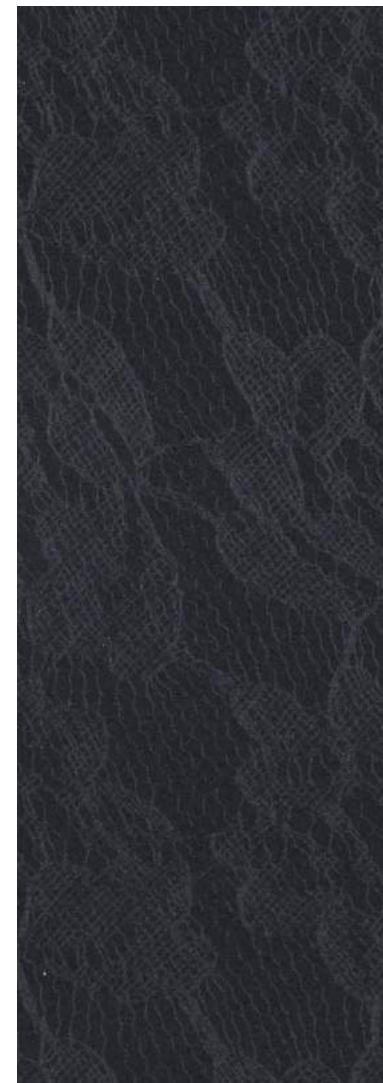
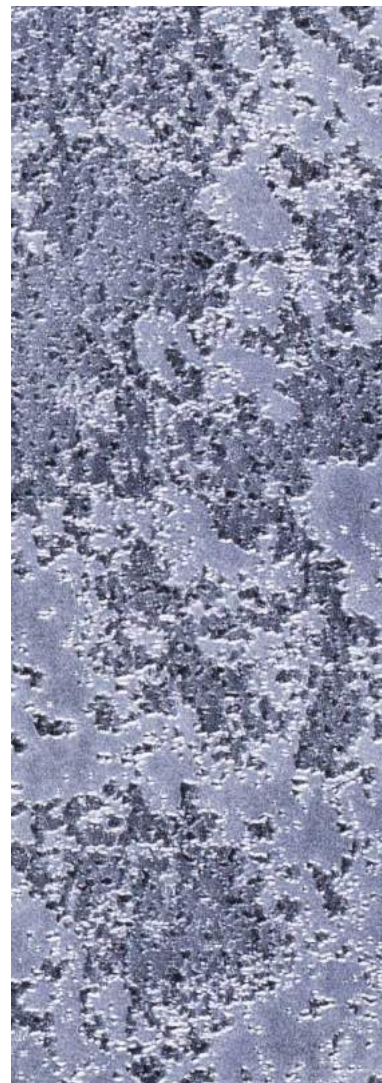
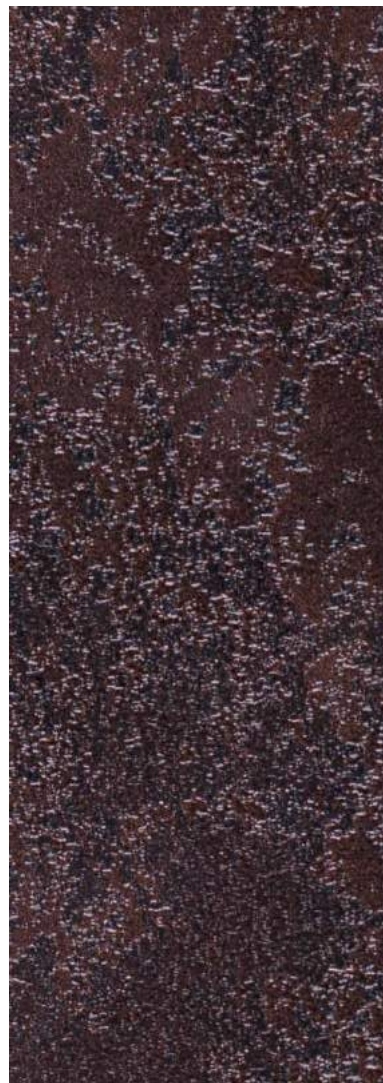
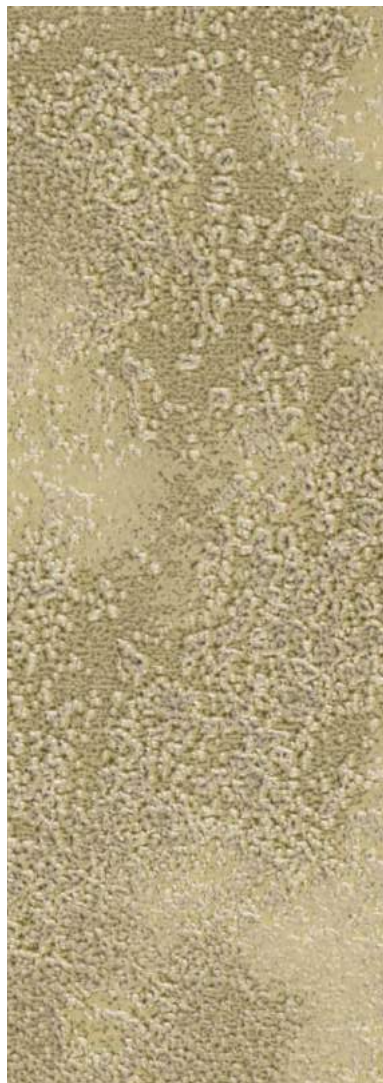


When the wonder of lights combines with the incorporeal materiality of the mirror and with the leather sensuality light sculptures come to life, fitting stylishly in any space and telling its story.



- . Customized and under-request production
- . Leather frame in different textures and colours

Examples in the following page



1.77" FOR COMMUNICATING BEAUTY

Bright backlit frames with precious or basic profiles, equipped with all the technology necessary to enhance colours and shapes: crossed by the light, the image acquires relief and brightness and turns into a wonderful piece of furniture. In the Visual line, attention to details and Italian production quality combine with the emotional richness of the colour, enhanced by a unique light.

The 'Visual' line has been conceived aiming to transform the display communication, surprising us with the creative furnishing powers of the backlit frame.

Thanks to their productive flexibility, the products of PH and PHF collections - combined with totally reliable components and friendly use - are precious allies in any project contract project.

SPRING-FIT: DYNAMIC PIECE OF FURNITURE

The real design is the one aiming to serve people and hiding smart ideas that make life better in a seemingly simple object.

The Spring-fit system lays on these principles.

Spring-fit is an image replacement made with backlit panels and frames that occurs thanks to a simple hand pressure.

The backlit panel-lightened and embellished by decorative frames-loses its role of advertising tool to become a dynamic and versatile piece of furniture capable of enhancing pictures and works in digital art, combining brightness, refinement and simplicity.





PH line

The new dimension of images

Design: **Cantoni**

Essential lines, minimum thickness, the image is made of passing light: the PH line allows to design dynamically-furnished spaces where light and colour provide a new imaginative dimension.

Linear and bright aluminium profiles including in just 1.77" all the technology needed to light the images printed on Backlite..



PH line

Design: **Cantoni**

Frame with LED backlighting for wall hanging. It is equipped with Springfit system to replace the image in an easy way. Sizes can be standard or customizable.

Ideal for store display communication. Perfect to create evocative atmospheres in residential spaces.



- . Aluminium crush-proof structure
- . On/off side button
- . Easy installation
- . Replaceable image
- . Print service included, even after sale



- . Aluminium crush-proof structure
- . On/off side button
- . Easy installation
- . Replaceable image
- . Print service included, even after sale



PH Reed

Design: **Cantoni**

In the stand-alone version, PH frame is equipped with pylon and supporting foot made of aluminium, while the frame back is arranged for a comfortable fixing.

The pole can be completed with transparent or coloured methacrylate shelves. Standard or customized sizes and support. Ideal to store display communication.



- . Profile and support in anodized aluminium
- . On/off side button
- . Backlit material: certified
- . Spring-fit system for image replacement
- . Print service included, even after sale





MPH - Iconic

Design: **Cantoni**

Lighted panel with LED backlit image. Printed image with customizable glass. Built-in mirror with 6 I-lights and adjustable intensity, 4200° kelvin gradation. Thanks to its high degree of customization, it's perfect in executive, commercial and residential solutions.

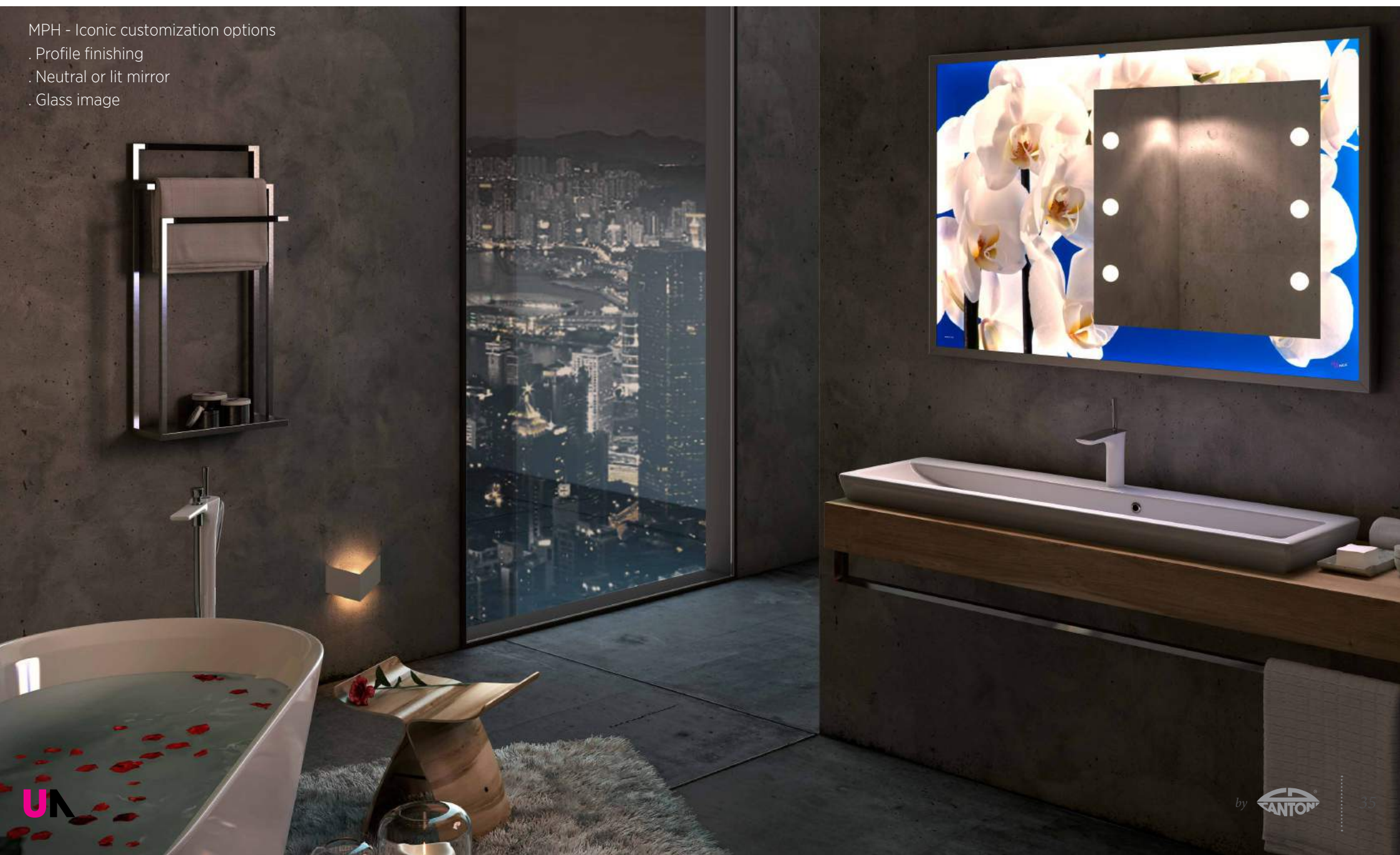


- . Profile and support in anodized aluminium
- . On/off side button
- . Actuator to switch on mirror lights



MPH - Iconic customization options

- . Profile finishing
- . Neutral or lit mirror
- . Glass image





PHF line

Flexible tailor-made emotions

Design: **Cantoni**

The line of backlit panels with PH.F frame offers strength and magic to the very high quality prints on translucent film, creating incredibly deep and beautiful products.

A collection that makes the tailor-made production its distinctive brand.

We chose the warm embrace of wood processed with passion to gently surround the emotions passed through your most precious images and prints.



Linea PHF

Tailor-made backlit panel

Design: **Cantoni**

LED backlit panel with high-resolution printing on backlit film.

Frame made by Italian craftsmen in leather or wood with craftsmanship processes.

Customized frame sizes, finishing and material. Customizable and replaceable image.



- . On/off side button
- . Built-in transformer
- . Replaceable spring with Spring-fit system
- . Easy installation
- . Print service included, even after sale

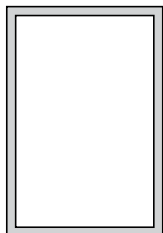


Customization options

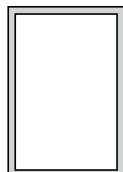
- . Frame material and finishing
- . Panel size
- . Image



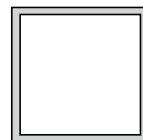
PH01
735X1035



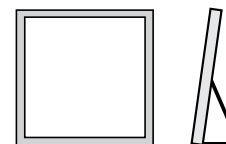
PH12
525X775



PH03
615X615



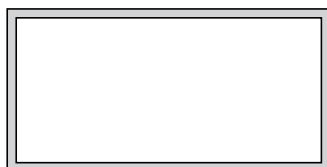
PH03.TABLE
615X615



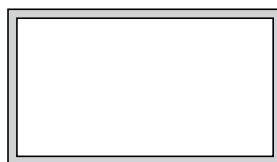
PH04
700X450



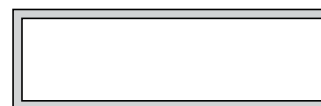
PH06
1450x735



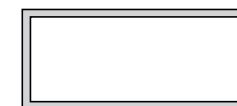
PH05
1235x700



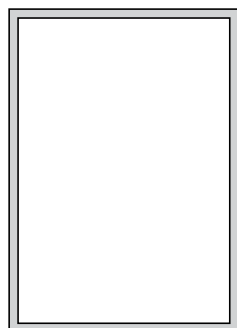
PH02
450x1450



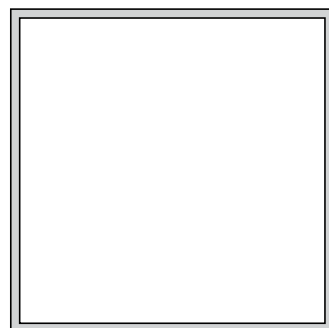
PH09
450x1035



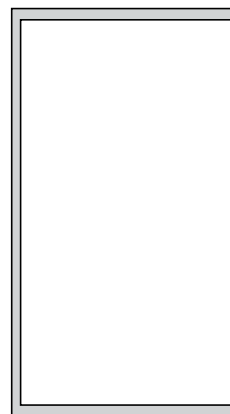
PH07
1035x1450



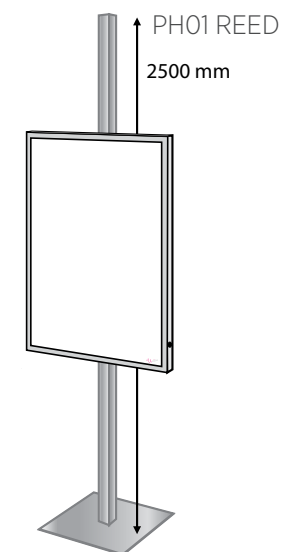
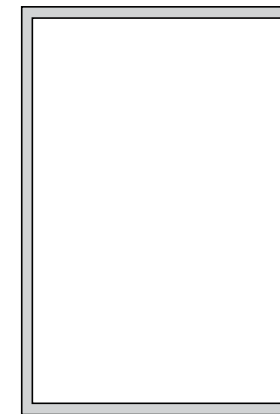
PH08
1450x1450



PH10
1035x1835



PH11
1235x1835



ABL ABS ABB ACH FCL FCS FCB FCC FSL FSS FSB FSC OCL



OCS OCB OCC OML OMS OMB OMC BCL BCS BCB BCC BEL BEB



BES BEC BML BMS BMC BSL BSS BSB BSC NL NS NB NC



All products by Cantoni are made in Italy with carefully selected materials.

Each product is the result of a careful study to ensure the best balance between aesthetics and technology.
The authenticity of each piece by Cantoni is ensured by our trademark.

We are always available to respond to every request and question about products.
Our technical department is then available for custom projects

PLEASE NOTE:

Cantoni reserves the right to modify at any time the items in the catalogue for technical or commercial purposes.
Shipments are made from our offices in San Marino

CANTONI TRADING SRL

Headquarters

Via Guardia di Rocca 10 - 47899 Galazzano - Rep. San Marino

Registered Office e Showroom

Strada degli Angariari 25 - 47891 Rovereta - Rep. San Marino

Tel. +378 0549 977527 - Fax +378 0549 876501

sales@lineaunica.com

www.lineaunica.com